

SPEX CertiPrep®
Your Science is Our Passion.®



고객 맞춤형 CRM 표준용액
Single 및 Multi 원소에 대해
원하는 농도, 용량 별 주문제작 가능

Semivolatiles

Single & Multi-Component Standards
for GC, GC-MS, LC & LC-MS



이레텍 코리아

경기도 수원시 영통구 영통로 127, 701호
기술영업부 이형석 팀장
010-3276-0883
031-203-0883
hyeongsuk.lee@eraetech.kr
www.labsystem.co.kr



Brand name : 랩시스템

THE 76 BIG MIX

The Most routinely analyzed Base Neutral and Acid compounds in ONE ampule
All compounds checked on our GC-MS Systems
Highest quality at an affordable price

Compound List

Each at 1,000 µg/mL*

- 1 Pyridine
- 2 n-Nitrosodimethylamine
- 3 Phenol
- 4 Aniline
- 5 bis(2-Chloroethyl)ether
- 6 2-Chlorophenol
- 7 1,3-Dichlorobenzene
- 8 **1,4-Dichlorobenzene-d4 IS[§]**
- 9 1,4-Dichlorobenzene
- 10 Benzyl Alcohol
- 11 1,2-Dichlorobenzene
- 12 2-Methylphenol
- 13 2,2'-oxybis(1-Chloropropane)
- 14 3+4-Methylphenols*
- 15 n-Nitroso-di-n-propylamine
- 16 Hexachloroethane
- 17 Nitrobenzene
- 18 Isophorone
- 19 2-Nitrophenol
- 20 2,4-Dimethylphenol
- 21 bis(2-Chloroethoxy)methane
- 22 2,4-Dichlorophenol
- 23 1,2,4-Trichlorobenzene
- 24 **Naphthalene-d8 IS[§]**
- 25 Naphthalene
- 26 4-Chloroaniline
- 27 Hexachlorobutadiene
- 28 4-Chloro-3-methylphenol
- 29 1-Methylnaphthalene
- 30 2-Methylnaphthalene
- 31 Hexachlorocyclopentadiene
- 32 2,4,6-Trichlorophenol
- 33 2,4,5-Trichlorophenol
- 34 2-Chloronaphthalene
- 35 2-Nitroaniline
- 36 1,4-Dinitrobenzene
- 37 1,3-Dinitrobenzene
- 38 Dimethylphthalate
- 39 Acenaphthylene

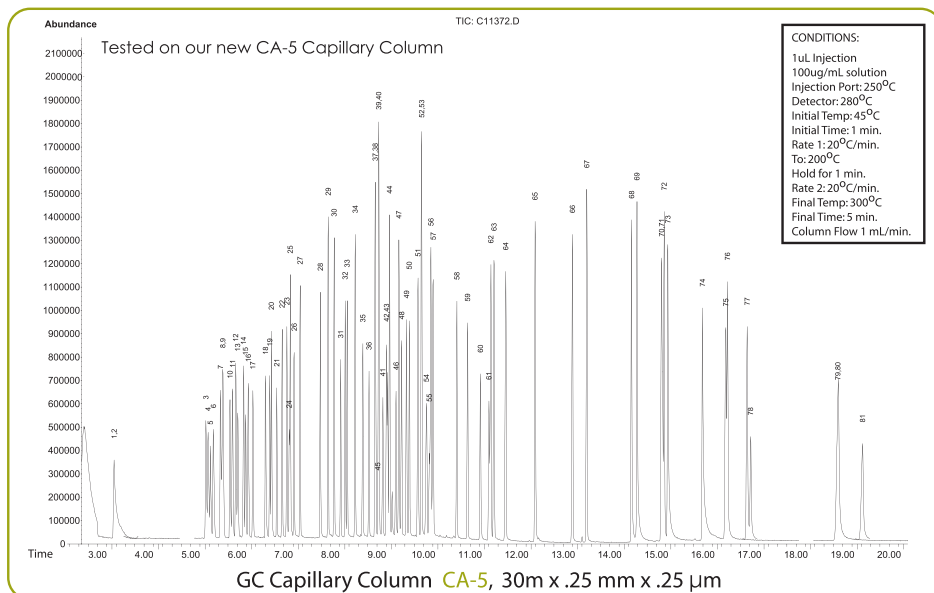
- 40 2,6-Dinitrotoluene
- 41 1,2-Dinitrobenzene
- 42 3-Nitroaniline
- 43 **Acenaphthene-d10 IS[§]**
- 44 Acenaphthene
- 45 2,4-Dinitrophenol
- 46 4-Nitrophenol
- 47 Dibenzofuran
- 48 2,4-Dinitrotoluene
- 49 2,3,5,6-Tetrachlorophenol
- 50 2,3,4,6-Tetrachlorophenol
- 51 Diethylphthalate

- 52 Fluorene
- 53 4-Chlorophenyl-phenylether
- 54 4-Nitroaniline
- 55 4,6-Dinitro-2-methylphenol
- 56 n-Nitrosodiphenylamine²
- 57 Azobenzene¹
- 58 4-Bromophenyl-phenylether
- 59 Hexachlorobenzene
- 60 Pentachlorophenol
- 61 **Phenanthrene-d10 IS[§]**
- 62 Phenanthrene
- 63 Anthracene

- 64 Carbazole
- 65 Di-n-butylphthalate
- 66 Fluoranthene
- 67 Pyrene
- 68 Butylbenzylphthalate
- 69 Bis(2-ethylhexyl)adipate
- 70 Benzo(a)anthracene
- 71 **Chrysene-d12 IS[§]**
- 72 Chrysene
- 73 Bis(2-ethylhexyl)phthalate
- 74 Di-n-octyl phthalate
- 75 Benzo(b)fluoranthene

- 76 Benzo(k)fluoranthene
- 77 Benzo(a)pyrene
- 78 **Perylene-d12 IS[§]**
- 79 Indeno(1,2,3-cd)pyrene
- 80 Dibenzo(a,h)anthracene
- 81 Benzo(g,h,i)perylene

1. - 1,2-Diphenylhydrazine (8270-listed analyte) decomposes to Azobenzene (mix component)
2. - N-Nitrosodiphenylamine (8270-listed analyte) decomposes to Diphenylamine (mix component)
*3. - Methylphenol and 4-Methylphenol concentration each are 500 µg/mL
§. - Internal standard mix CLPS-12 sold separately



CONDITIONS:
1µL Injection
100µg/mL solution
Injection Port: 250°C
Detector: 280°C
Initial Temp: 45°C
Initial Time: 1 min.
Rate: 1:20°C/min.
To: 200°C
Hold for 1 min.
Rate: 2:20°C/min.
Final Temp: 300°C
Final Time: 5 min.
Column Flow 1 mL/min.

Standard

Part #: 76-BIG-MIX
1mL ampule at 1000 µg/mL
in Methylene Chloride

Used for GC-MS Analysis of Semi-Volatile Organic

To find out more information call your sales representative at 800-LAB-SPEX x444

IT DOESN'T GET ANY BIGGER THAN THIS!

SPEX CertiPrep®

Semivolatiles

METHOD 506

EPA method 506 is an analytical method for the monitoring of phthalate and adipate esters in drinking water by GC-PID.

Method 506 Analyte Mix

7 Certified Components:

Butylbenzyl phthalate	Dimethyl phthalate
Di-n-butyl phthalate	bis(2-Ethylhexyl)adipate
Di-n-octyl phthalate	bis(2-Ethylhexyl)phthalate
Diethyl phthalate	

1 mL @ 2,000 µg/mL in Isooctane

Catalog#: 506-AH

METHOD 525

EPA method 525 is an analytical method for the monitoring of SVOAs in drinking water and raw water sources by GC-MS.

Method 525.3 Mix A

18 Certified Components:

Acetochlor	Nitrofen
Butylated hydroxytoluene (BHT)	Oxyfluorfen
Chlorfenvinphos	Phorate
DEET (N,N Diethylmetatoluamide)	Phosphamidon
Dimethipin	Profenofos
2,4-Dinitrotoluene	Tebuconazole
2,6-Dinitrotoluene	Tetrachlorvinphos
Ethyl parathion	Tribufos
Methyl parathion	Vinclozolin

1mL @ 1,000 µg/mL in Acetone

Catalog#: 5253-A

Method 525.3 PCB Mix

14 Certified Components:

2-Chlorobiphenyl (1)
4-Chlorobiphenyl (3)
2,4'-Dichlorobiphenyl (8)
2,2',5-Trichlorobiphenyl (18)
2,4,4'-Trichlorobiphenyl (28)
2,2',3,5'-Tetrachlorobiphenyl (44)
2,2',5,5'-Tetrachlorobiphenyl (52)
2,3',4',5-Tetrachlorobiphenyl (70)
2,3,3',4',6-Pentachlorobiphenyl (110)
2,3',4,4',5-Pentachlorobiphenyl (118)
2,2',3,4,4',5'-Hexachlorobiphenyl (138)
2,2',3,4',5',6-Hexachlorobiphenyl (149)
2,2',4,4',5,5'-Hexachlorobiphenyl (153)
2,2',3,4,4',5,5'-Heptachlorobiphenyl (180)

1mL @ 200 µg/mL in Acetone

Catalog#: 5253-PCB

Semivolatile Organics - Mix A

24 Certified Components:

Acenaphthylene	Dibenz(a,h)anthracene
Anthracene	Diethyl phthalate
Benzo(a)anthracene	Dimethyl phthalate
Benzo(a)pyrene	Di-n-butyl phthalate
Benzo(b)fluoranthene	Fluorene
Benzo(g,h,i)perylene	Hexachlorobenzene
Benzo(k)fluoranthene	Hexachlorocyclopentadiene
bis(2-Ethylhexyl)adipate	Indeno(1,2,3-cd)pyrene
bis(2-Ethylhexyl)phthalate	Isophorone
Butylbenzyl phthalate	Pentachlorophenol (2,000 µg/mL)
Chlorobenzilate	Phenanthrene
Chrysene	Pyrene

1 mL @ 500 µg/mL in Acetone

Catalog#: 5252-A

Organochlorine Pesticides Mix A

18 Certified Components:

Aldrin	Endosulfan I
γ-BHC	Endosulfan II
α-BHC	Endosulfan sulfate
δ-BHC	Endrin
β-BHC	Endrin aldehyde
4,4'-DDD	Endrin ketone
4,4'-DDE	Heptachlor
4,4'-DDT	Heptachlor epoxide
Dieldrin	Methoxychlor

1 mL @ 200 µg/mL in Acetone

Catalog#: 5252-PA

Organochlorine Pesticides Mix B

15 Certified Components:

Alachlor	Dacthal (DCPA)
α-Chlordane	Etridiazole
γ-Chlordane	Hexachlorobenzene
Chlorobenzilate	trans-Nonachlor
Chloroneb	Permethrin (cis & trans)
Chlorothalonil	Propachlor
Chlorpyrifos	Trifluralin
Cyanazine	

1 mL @ 200 µg/mL in Acetone

Catalog#: 5252-PB

Need larger quantities?

Volume discounts are available!
Call us at **1-800-LAB-SPEX**
for more information.

Nitrogen-Phosphorous Pesticides Mix C

34 Certified Components:

Ametryn	EPTC	Prometon
Atraton	Ethoprop	Prometryn
Atrazine	Merphos	Pronamide
Bromacil	Metolachlor	Propazine
Butachlor	Metribuzin	Simetryn
Butylate	Methyl	Simazine
Chloropropham	Paraoxon	Terbacil
Cycloate	Mevinphos	Terbufos
Diazinon	MGK 264	Terbutryn
Dichlorovos	Molinate	Vernolate
Diphenamid	Napropamide	
Disulfoton sulfone	Pebulate	

1 mL @ 200 µg/mL in Acetone

Catalog#: 5252-PC

Nitrogen-Phosphorous Pesticides Mix D

9 Certified Components:

Fenamiphos	Hexazinone	Terbuthiuron
Fenarimol	Norflurazon	Triademefon
Fluridone	Stirofo	Tricyclazole

1 mL @ 200 µg/mL in Acetone

Catalog#: 5252-PD

Nitrogen-Phosphorous Pesticides Mix E

4 Certified Components:

Carboxin	Disulfoton sulfoxide
Disulfoton	Merphos

1 mL @ 200 µg/mL in Acetone

Catalog#: 5252-E

Toxaphene

1 Certified Component:

Toxaphene

1 mL @ 200 µg/mL in Hexane

Catalog#: TOX-X

1 mL @ 1,000 µg/mL in Hexane

Catalog#: S-3535

Chlordane Standard

1 Certified Component:

Technical Chlordane

1 mL @ 200 µg/mL in Hexane

Catalog#: CDANE-X

1 mL @ 1,000 µg/mL in Hexane

Catalog#: S-780

1 mL @ 2,000 µg/mL in Hexane

Catalog#: CDANE-XH

Internal Standard**3 Certified Components:**

Acenaphthene-d₁₀
 Chrysene-d₁₂
 Phenanthrene-d₁₀

1 mL @ 500 µg/mL in Acetone

Catalog#: 5252-I

Internal Standard Single**1 Certified Component:**

13C-Pentachlorophenol (IS-4)

1 mL @ 1,000 µg/mL in Methanol

Catalog#: S-4202

525.3 Surrogate**3 Certified Components:**

Benzo[a]pyrene-d₁₂
 2-Nitro-m-xylene
 Triphenyl phosphate

1 mL @ 1,000 µg/mL in Acetone

Catalog#: 5253-S

Surrogate Standard**3 Certified Components:**

1,3-Dimethyl -2-nitrobenzene
 Perylene-d₁₂
 Triphenylphosphate

1 mL @ 500 µg/mL in Acetone

Catalog#: 5252-S

Performance Check Solution**3 Certified Components:**

4,4'-DDT
 DFTPP
 Endrin

1 mL @ 500 µg/mL in Methylene chloride

Catalog#: 5252-PCS

Fortification Solution**1 Certified Component:**

Terphenyl-d₁₄

1 mL @ 500 µg/mL in Methylene chloride

Catalog#: 5252-FS

METHOD 535

EPA method 535 is an analytical method for the monitoring of Chloroacetanilide and other Acetamide herbicide degradates in drinking water by SPE followed by LC-MS-MS.

Chloroacetanilide and Acetamide Herbicide Degradates Standard**6 Certified Components:**

Acetochlor ESA	Alachlor OA
Acetochlor OA	Metochlor ESA
Alachlor ESA	Metochlor OA

1 mL @ 500 µg/mL in Methanol

Catalog#: 535-A

1 Certified Component:

Dimethachlor ESA

1 mL @ 500 µg/mL in Methanol

Catalog#: 535-I

1 Certified Component:

Butachlor ESA

1 mL @ 500 µg/mL in Methanol

Catalog#: 535-S

Helpful Hint:

We value your input!
 Please call **1-800-LAB-SPEX ext. 444** with any suggestions, questions or comments.

METHOD 550

EPA methods 550 and 550.1 are an analytical methods for the monitoring of PAHs in drinking water by HPLC with UV and fluorescence detectors.

PAH Analyte Mix

16 Certified Components:

	$\mu\text{g/mL}$		$\mu\text{g/mL}$
Acenaphthene	1,000	Chrysene	50
Acenaphthylene	1,000	Dibenzo(a,h)anthracene	10
Anthracene	50	Fluoranthene	5
Benzo(a)anthracene	1	Fluorene	100
Benzo(a)pyrene	5	Indeno(1,2,3-cd)pyrene	10
Benzo(b)fluoranthene	1	Naphthalene	1,000
Benzo(g,h,i)perylene	5	Phenanthrene	50
Benzo(k)fluoranthene	1	Pyrene	50

1 mL in Acetonitrile

Catalog#: 550-A

Internal Standard

1 Certified Component:

4,4'-Difluorobiphenyl

1 mL @ 100 $\mu\text{g/mL}$ in Acetonitrile

Catalog#: 550-I

METHOD 552

EPA method 552 is an analytical method for the monitoring of haloacetic acids and phenolic disinfectant byproducts in drinking water by GC-ECD.

Free Acids

8 Certified Components:

Bromochloroacetic acid	Monobromoacetic acid
Dibromoacetic acid	Monochloroacetic acid
Dichloroacetic acid	Trichloroacetic acid
2,4-Dichlorophenol	2,4,6-Trichlorophenol

1 mL @ 200 $\mu\text{g/mL}$ in Methyl tert-butyl ether

Catalog#: 552-A

Methyl Esters

8 Certified Components:

2,4-Dichloroanisole	Methyl dibromoacetate
Methyl bromoacetate	Methyl dichloroacetate
Methyl bromochloroacetate	Methyl trichloroacetate
Methyl chloroacetate	2,4,6-Trichloroanisole

1 mL @ 200 $\mu\text{g/mL}$ in Methyl tert-butyl ether

Catalog#: 552-MEO

Analyte Mix A

7 Certified Components:

	$\mu\text{g/mL}$		$\mu\text{g/mL}$
Bromochloroacetic acid	200	Monobromoacetic acid	200
Dalapon	200	Monochloroacetic acid	200
Dibromoacetic acid	200	Trichloroacetic acid	200
Dichloroacetic acid	200		

1 mL in Methyl tert-butyl ether

Catalog#: 5521-A

Helpful Hint:

Custom standards? No problem!
Visit our web site to submit your request online:
www.spexcertiprep.com/customorganics.

Method 552.2 Analytes as Free Acids**11 Certified Components:**

	$\mu\text{g/mL}$
Bromochloroacetic acid	400
Bromodichloroacetic acid	400
Chlorodibromoacetic acid	1,000
Dalapon	400
Dibromoacetic acid	200
2,3-Dibromopropionic acid (surrogate)	1,000
Dichloroacetic acid	600
Monobromoacetic acid	400
Monochloroacetic acid	600
Tribromoacetic acid	2,000
Trichloroacetic acid	200

1 mL in Methyl tert-butyl ether

Catalog#: 5522-AS

(same as Method 552.2 Analytes as Free Acids,
but without surrogate)

10 Certified Components:

1 mL in Methyl tert-butyl ether

Catalog#: 5522-A

Methyl Esters**11 Certified Components:**

	$\mu\text{g/mL}$
Dalapon methyl ester	400
Methyl monochloroacetate	600
Methyl monobromoacetate	400
Methyl bromochloroacetate	400
Methyl bromodichloroacetate	400
Methyl chlorodibromoacetate	1,000
Methyl dibromoacetate	200
Methyl 2,3-dibromopropionate (surrogate)	1,000
Methyl dichloroacetate	600
Methyl tribromoacetate	2,000
Methyl trichloroacetate	200

1 mL in Methyl tert-butyl ether

Catalog#: 5522-MEOS

(same as Method 552.2 Analytes as Free Acids,
but without surrogate)

10 Certified Components:

1 mL in Methyl tert-butyl ether

Catalog#: 5522-MEO

Internal Standard**1 Certified Component:**

1,2,3-Trichloropropane

1 mL @ 1,000 $\mu\text{g/mL}$ in Methyl tert-butyl ether

Catalog#: S-3665

Surrogate Standard**1 Certified Component:**

2-Bromopropionic acid

1 mL @ 1,000 $\mu\text{g/mL}$ in Methyl tert-butyl ether

Catalog#: S-3895

552 Surrogate**1 Certified Component:**

2,3-Dichloropropanoic acid

1 mL @ 1,000 $\mu\text{g/mL}$ in Methyl tert-butyl ether

Catalog#: S-2598

Did You Know?

On SPEX CertiPrep's website you can search by CAS number or component name on our site search tool and on our Custom Standards Request Form for singles and mixes.

METHOD 604

EPA method 604 is an analytical method for the monitoring of phenols in municipal and industrial wastewater by GC-FID

Analytes

11 Certified Components:

4-Chloro-3-methylphenol	2-Nitrophenol
2-Chlorophenol	4-Nitrophenol
2,4-Dichlorophenol	Pentachlorophenol
2,4-Dimethylphenol	Phenol
4,6-Dinitro-2-methylphenol	2,4,6-Trichlorophenol
2,4-Dinitrophenol	

1 mL @ 2,000 µg/mL in Methylene chloride

Catalog#: CLPS-A

METHOD 605

EPA method 605 is an analytical method for the monitoring of benzidines in municipal and industrial wastewater by HPLC and an electrochemical detector.

Analyte Mix

2 Certified Components:

Benzidine
3,3'-Dichlorobenzidine

1 mL @ 2,000 µg/mL in Methanol

Catalog#: 605-X

5 mL @ 2,000 µg/mL in Methanol

Catalog#: 605-X5

Did you Know?

Do you want to have faster access to SPEX CertiPrep products searches? Wish you could search from our offering of over 5000 products, right from your browser's search or navigation bar?

Add the SPEX CertiPrep Search Provider to your browser and you can simply type your search term into your browser's navigation bar (Internet Explorer 8+ and Google Chrome) or search bar (Firefox) and select SPEX CertiPrep as your search provider. Press enter, and you'll be taken directly to the results page!

METHOD 606

EPA method 606 is an analytical method for the monitoring of phthalate esters in municipal and industrial wastewater by GC-ECD.

Analyte Mix

6 Certified Components:

Butylbenzyl phthalate	Dimethyl phthalate
Di-n-Butyl phthalate	Di-n-Octyl phthalate
Diethyl phthalate	bis(2-Ethylhexyl) phthalate

1 mL @ 2,000 µg/mL in Isooctane

Catalog#: 606-XH

METHOD 612

EPA method 612 is an analytical method for the monitoring of chlorinated hydrocarbons in municipal and industrial wastewater by GC-ECD.

Chlorinated Hydrocarbons Mix

9 Certified Components:

2-Chloronaphthalene	Hexachlorobutadiene
1,2-Dichlorobenzene	Hexachlorocyclopentadiene
1,3-Dichlorobenzene	Hexachloroethane
1,4-Dichlorobenzene	1,2,4-Trichlorobenzene
Hexachlorobenzene	

1 mL @ 2,000 µg/mL in Isooctane

Catalog#: 612-X



METHOD 625

EPA method 625 is an analytical method for the monitoring of acid and base-neutral extractable fractions in municipal and industrial wastewater by GC-MS.

"Big-Mix" - Base Neutral & Acid Combination Calibration Standard

Semivolatiles Organics Mix with 76 Certified Components

76 Certified Components:

Acenaphthene	Di-n-butyl phthalate
Acenaphthylene	Di-n-octyl phthalate
Azobenzene*	bis(2-Ethylhexyl)adipate
Benz(a)anthracene	bis(2-Ethylhexyl)phthalate
Benzo(a)pyrene	Fluoranthene
Benzo(b)fluoranthene	Fluorene
Benzo(g,h,i)perylene	Hexachlorobenzene
Benzo(k)fluoranthene	Hexachlorobutadiene
Benzyl alcohol	Hexachlorocyclopentadiene
4-Bromodiphenyl ether	Hexachloroethane
Butylbenzyl phthalate	Indeno(1,2,3-c,d)pyrene
Carbazole	Isophorone
4-Chloroaniline (p-Chloroaniline)	1-Methylnaphthalene
bis(2-Chloroethoxy)methane	2-Methylnaphthalene
bis(2-Chloroethyl)ether	2-Methylphenol***
bis(2-Chloro-1-methylethyl) ether	3-Methylphenol***
2-Chloronaphthalene	4-Methylphenol
2-Chlorophenol	Naphthalene
4-Chlorophenyl-phenyl ether	2-Nitroaniline
4-Chloro-3-methylphenol	3-Nitroaniline
Chrysene	4-Nitroaniline
Dibenzofuran	Nitrobenzene
Dibenz(a,h)anthracene	2-Nitrophenol
1,2-Dichlorobenzene	4-Nitrophenol
1,3-Dichlorobenzene	Aniline
1,4-Dichlorobenzene	N-Nitrosodimethylamine**
2,4-Dichlorophenol	N-Nitrosodi-n-propylamine
Diethyl phthalate	Anthracene
Dimethyl phthalate	Pentachlorophenol
2,4-Dimethylphenol	Phenanthrene
1,2-Dinitrobenzene	Phenol
1,3-Dinitrobenzene	Pyrene
1,4-Dinitrobenzene	Pyridine
2,4-Dinitrophenol	2,3,4,6-Tetrachlorophenol
2,4-Dinitrotoluene	2,3,5,6-Tetrachlorophenol
2,6-Dinitrotoluene	1,2,4-Trichlorobenzene
4,6-Dinitro-2-methylphenol	2,4,5-Trichlorophenol
Diphenylamine**	2,4,6-Trichlorophenol

*1,2-Diphenylhydrazine (8270-listed analyte) decomposes to Azobenzene (mix component)

** N-Nitrosodiphenylamine (8270-listed analyte) decomposes to Diphenylamine (mix component)

*** 3-Methylphenol and 4-Methylphenol concentration each are 500 µg/mL

1 mL @ 1,000 µg/mL in Methylene chloride

Catalog#: 76-BIG-MIX

BIG-BN-2 - Base Neutral & Acid Combination Calibration Standard

Semivolatiles Calibration Standard containing all 49 base-neutrals contained in blends: CLPS-B, CLPS-C, CLPS-D, and CLPS-G at 2,000 µg/mL

49 Certified Components:

Acenaphthene	Dimethyl phthalate
Acenaphthylene	Di-n-butyl phthalate
Anthracene	2,4-Dinitrotoluene
Benzo(a)anthracene	2,6-Dinitrotoluene
Benzo(a)pyrene	Di-n-octyl phthalate
Benzo(b)fluoranthene	Fluoranthene
Benzo(g,h,i)perylene	Fluorene
Benzo(k)fluoranthene	Hexachlorobenzene
Benzyl alcohol	Hexachlorobutadiene
bis(2-Chloroethoxy)methane	Hexachlorocyclopentadiene
bis(2-Chloroethyl)ether	Hexachloroethane
bis(2-Chloroisopropyl)ether	Indeno(1,2,3-cd)pyrene
bis(2-Ethylhexyl)phthalate	Isophorone
4-Bromophenyl phenyl ether	2-Methylnaphthalene
Butylbenzyl phthalate	Naphthalene
4-Chloroaniline	2-Nitroaniline
2-Chloronaphthalene	3-Nitroaniline
4-Chlorophenyl-phenyl ether	4-Nitroaniline
Chrysene	Nitrobenzene
Dibenz(a,h)anthracene	N-Nitroso-di-n-propylamine
Dibenzofuran	N-Nitrosodiphenylamine
1,2-Dichlorobenzene	Phenanthrene
1,3-Dichlorobenzene	Pyrene
1,4-Dichlorobenzene	1,2,4-Trichlorobenzene
Diethyl phthalate	

1 mL @ 2,000 µg/mL in Methylene chloride:benzene

Catalog#: BIG-BN-2

5 mL

Catalog#: BIG-BN-2-5

Phenolics

11 Certified Components:

4-Chloro-3-methylphenol	2-Nitrophenol
2-Chlorophenol	4-Nitrophenol
2,4-Dichlorophenol	Phenol
2,4-Dimethylphenol	Pentachlorophenol
4,6-Dinitro-2-methylphenol	2,4,6-Trichlorophenol
2,4-Dinitrophenol	

1 mL @ 2,000 µg/mL in Methylene chloride

Catalog#: CLPS-A

Helpful Hint:

Note: The 76-BIG-MIX is made with freshly distilled and preserved Methylene Chloride to assure the stability of Benzidines and Phenolics.

Polynuclear Aromatic Hydrocarbons**16 Certified Components:**

Acenaphthene	Chrysene
Acenaphthylene	Dibenz(a,h)anthracene
Anthracene	Fluoranthene
Benzo(a)anthracene	Fluorene
Benzo(a)pyrene	Indeno(1,2,3-cd)pyrene
Benzo(b)fluoranthene	Naphthalene
Benzo(g,h,i)perylene	Phenanthrene
Benzo(k)fluoranthene	Pyrene

1 mL @ 2,000 µg/mL in Methylene chloride: Benzene

Catalog#: CLPS-B**Haloethers & Phthalates****13 Certified Components:**

bis(2-Chloroethoxy)methane	Di-n-butyl phthalate
bis(2-Chloroethyl)ether	Diethyl phthalate
bis(2-Chloroisopropyl)ether	Dimethyl phthalate
bis(2-Ethylhexyl)phthalate	Di-n-Octyl phthalate
4-Bromophenyl phenyl ether	N-Nitroso-di-n-propylamine
Butylbenzyl phthalate	N-Nitrosodiphenylamine
4-Chlorophenyl-phenyl ether	

1 mL @ 2,000 µg/mL in Methylene chloride

Catalog#: CLPS-C**Chlorinated/Nitrated Hydrocarbons****13 Certified Components:**

2-Chloronaphthalene	Hexachlorobutadiene
1,2-Dichlorobenzene	Hexachlorocyclopentadiene
1,3-Dichlorobenzene	Hexachloroethane
1,4-Dichlorobenzene	Isophorone
2,4-Dinitrotoluene	Nitrobenzene
2,6-Dinitrotoluene	1,2,4-Trichlorobenzene
Hexachlorobenzene	

1 mL @ 2,000 µg/mL in Methylene chloride

Catalog#: CLPS-D**3,3'-Dichlorobenzidine****1 Certified Component:**

3,3'-Dichlorobenzidine

1 mL @ 2,000 µg/mL in Methanol

Catalog#: 625-E**Additional Analytes****2 Certified Components:**

Benzidine
N-Nitrosodimethylamine

1 mL @ 2,000 µg/mL in Methanol

Catalog#: 625-F**Additional Analytes****7 Certified Components:**

Benzyl alcohol	2-Nitroaniline
4-Chloroaniline	3-Nitroaniline
Dibenzofuran	4-Nitroaniline
2-Methylnaphthalene	

1 mL @ 2,000 µg/mL in Methylene chloride

Catalog#: CLPS-G**Pesticides****18 Certified Components:**

Aldrin	Endosulfan II
α-BHC	Endosulfan sulfate
β-BHC	Endrin
γ-BHC (Lindane)	Endrin aldehyde
δ-BHC	Endrin ketone
4,4'-DDD	Dieldrin
4,4'-DDE	Heptachlor
4,4'-DDT	Heptachlor epoxide (Isomer B)
Endosulfan I	Methoxychlor

1 mL @ 2,000 µg/mL in Benzene

Catalog#: 625-PH**Toxaphene Standard****1 Certified Component:**

Toxaphene

1 mL @ 200 µg/mL in Hexane

Catalog#: TOX-X

1 mL @ 1,000 µg/mL in Hexane

Catalog#: S-3535

1 mL @ 2,000 µg/mL in Hexane

Catalog#: TOX-XH**Chlordane Standard****1 Certified Component:**

Technical Chlordane

1 mL @ 200 µg/mL in Hexane

Catalog#: CDANE-X

1 mL @ 1,000 µg/mL in Hexane

Catalog#: S-780

1 mL @ 2,000 µg/mL in Hexane

Catalog#: CDANE-XH

Aroclor Mix 1

Mix one contains the following Aroclors:

4 Certified Components:

Aroclor 1016 Aroclor 1232
Aroclor 1248 Aroclor 1260

1 mL @ 200 µg/mL in Hexane

Catalog#: PCB-M1

Aroclor Mix 2

Mix two contains the following Aroclors:

3 Certified Components:

Aroclor 1221
Aroclor 1254
Aroclor 1242

1 mL @ 200 µg/mL in Hexane

Catalog#: PCB-M2

Individual Aroclors

Two concentrations available:

200 µg/mL and 1,000 µg/mL, 1 mL each in Hexane

Concentration	Certified Components	Catalog#
200 µg/mL	1	PCB-1016
1,000 µg/mL	1	PCB-1016H
200 µg/mL	1	PCB-1221
1,000 µg/mL	1	PCB-1221H
200 µg/mL	1	PCB-1232
1,000 µg/mL	1	PCB-1232H
200 µg/mL	1	PCB-1242
1,000 µg/mL	1	PCB-1242H
200 µg/mL	1	PCB-1248
1,000 µg/mL	1	PCB-1248H
200 µg/mL	1	PCB-1254
1,000 µg/mL	1	PCB-1254H
200 µg/mL	1	PCB-1260
1,000 µg/mL	1	PCB-1260H
200 µg/mL	1	PCB-1262
1,000 µg/mL	1	PCB-1262H
200 µg/mL	1	PCB-1268
1,000 µg/mL	1	PCB-1268H

PCB Kit H

1 mL @ 1,000 µg/mL of each of the following in a kit:

PCB-1016H PCB-1221H PCB-1232H
PCB-1242H PCB-1248H PCB-1254H
PCB-1260H

Catalog#: PCB-KH

PCB Kit 200

1 mL @ 200 µg/mL of each of the following in a kit:

PCB-1016 PCB-1221 PCB-1232
PCB-1242 PCB-1248 PCB-1254
PCB-1260

Catalog#: PCB-200K

Base/Neutral Surrogate

3 Certified Components:

2-Fluorobiphenyl
Nitrobenzene-d₅
Terphenyl-d₁₄

1 mL @ 1,000 µg/mL in
50:50 Methylene chloride:Acetone

Catalog#: CLPS-SB

5 mL

Catalog#: CLPS-SB5

1 mL @ 5,000 µg/mL in
Methylene chloride:Acetone:Benzene

Catalog#: CLPS-SBH

5 mL

Catalog#: CLPS-SBH5

Need larger quantities?

Volume discounts are available!
Call us at **1-800-LAB-SPEX**
for more information.

**Optional:
625 Base Neutral IS/SS**

Component @ 1,000 ug/mL:	Matrix	Catalog#
Anthracene-d10	MeCl ₂	S-291
Benzo(a)anthracene-d12	Methanol	S-4759
4,4'-Dibromobiphenyl	Acetone	S-1228
4,4'-Dibromooctafluorobiphenyl	MTBE	S-1250
Decafluorobiphenyl	Methanol	S-1103
2,2'-Difluorobiphenyl	Methanol	S-1542
4-Fluoroaniline	Methanol	S-4048
1-Fluoronaphthalene	Methanol	S-2047
2-Fluoronaphthalene	Methanol	S-4308
Naphthalene-d8	Methanol	S-2660
Nitrobenzene-d5	Methanol	S-2710
Phenanthrene-d10	MeCl ₂	S-3020
Pyridine-d5	Methanol	S-3937

**High Concentration Organic
Tinted Indicator Surrogates****4 Certified Components:**

	µg/mL
2-Fluorobiphenyl	5,000
Nitrobenzene-d ₅	5,000
p-Terphenyl-d ₁₄	5,000
Methyl Orange	12,500

1 mL in Methylene chloride:Acetone:Benzene

Catalog#: CLPS-SBH-TI

5 mL

Catalog#: CLPS-SBH5-TI**Acid Surrogate****3 Certified Components:**2-Fluorophenol
Phenol-d₅
2,4,6-Tribromophenol

1 mL @ 2,000 µg/mL in Methanol

Catalog#: CLPS-SA

5 mL @ 2,000 µg/mL in Methanol

Catalog#: CLPS-SA5

1 mL @ 10,000 µg/mL in Methanol

Catalog#: CLPS-SAH**625 Acid IS/SS**

Component @ 1,000 ug/mL:	Matrix	Catalog#
2-Fluorophenol	Methanol	S-2050
Pentafluorophenol	Methanol	S-4047
Phenol-d5	MeCl ₂	S-4195-MC

Internal Standard**6 Certified Components:**Acenaphthene-d₁₀ Naphthalene-d₈
Chrysene-d₁₂ Perylene-d₁₂
1,4-Dichlorobenzene-d₄ Phenanthrene-d₁₀

1 mL @ 4,000 µg/mL in Methylene chloride:Benzene

Catalog#: CLPS-I

2 mL @ 2,000 µg/mL in Methylene chloride:Benzene

Catalog#: CLPS-I2**Alternate Internal Standard****6 Certified Components:**Acenaphthene-d₁₀ Naphthalene-d₈
Chrysene-d₁₂ Perylene-d₁₂
1,4-Dichlorobenzene-d₄ Phenanthrene-d₁₀

1 mL @ 2,000 µg/mL in Methylene chloride

Catalog#: CLPS-I90**Acids Matrix Spike****5 Certified Components:**4-Chloro-3-Methylphenol Pentachlorophenol
2-Chlorophenol Phenol
4-Nitrophenol

1 mL @ 2,000 µg/mL in Methylene chloride

Catalog#: CLPS-MSA

5 mL

Catalog#: CLPS-MSA5

Base/Neutrals Matrix Spike

6 Certified Components:

Acenaphthene	N-Nitroso-di-n-propylamine
1,4-Dichlorobenzene	Pyrene
2,4-Dinitrotoluene	1,2,4-Trichlorobenzene

1 mL @ 1,000 µg/mL in Methylene chloride

Catalog#: CLPS-MSB

Base/Neutrals Tinted Matrix Spike

7 Certified Components:

1,2,4-Trichlorobenzene	Bromophenol blue
1,4-Dichlorobenzene	N-Nitrosodi-n-propylamine
2,4-Dinitrotoluene	Pyrene
Acenaphthene	

1 mL @ 1,000 µg/mL in Methanol

Catalog#: CLPS-MSB-TI

GC/MS Tuning Standard

1 Certified Component:

Decafluorotriphenylphosphine

1 mL @ 2,500 µg/mL in Methanol

Catalog#: CLPS-T

4-Component GC-MS Tuning Standard

4 Certified Components:

Benzidine	Decafluorotriphenylphosphine
4,4-DDT	Pentachlorophenol

1 mL @ 2,500 µg/mL in Methanol

Catalog#: CLPS-T4

GC-MS Test Mix

2 Certified Components:

DFTPP
Pentachlorophenol

1 mL @ 250 µg/mL in Methylene Chloride

Catalog#: 625-T2

METHOD 8041

EPA method 8041 is a general analytical method for the monitoring of phenols by GC-FID or GC-ECD.

RCRA Target Analytes

21 Certified Components:

4-Chloro-3-methylphenol	3-Methylphenol
2-Chlorophenol	4-Methylphenol
2-Cyclohexyl-4,6-dinitrophenol	2-Nitrophenol
2,4-Dichlorophenol	4-Nitrophenol
2,6-Dichlorophenol	Pentachlorophenol
2,4-Dimethylphenol	Phenol
4,6-Dinitro-2-methylphenol	2,3,4,5-Tetrachlorophenol
2,4-Dinitrophenol	2,3,4,6-Tetrachlorophenol
Dinoseb (2-sec-Butyl-4,6-dinitrophenol)	2,3,5,6-Tetrachlorophenol
2-Methylphenol	2,4,5-Trichlorophenol
	2,4,6-Trichlorophenol

1 mL @ 1,000 µg/mL in Isopropanol

Catalog#: 8041-A

Non-RCRA Singles

Component @ 1,000 ug/mL:	Matrix	Catalog#
2-Chloro-5-methylphenol	Methanol	S-946
4-Chloro-2-methylphenol	Methanol	S-3979
3-Chlorophenol	Methanol	S-901
4-Chlorophenol	Methanol	S-906
2,3-Dichlorophenol	Methanol	S-1406
2,5-Dichlorophenol	Methanol	S-1412
3,4-Dichlorophenol	Methanol	S-1416
3,5-Dichlorophenol	Methanol	S-1417
2,3-Dimethylphenol	Methanol	S-1659
2,5-Dimethylphenol	Acetone	S-1661
2,6-Dimethylphenol	Methanol	S-1662
3,4-Dimethylphenol	Methanol	S-1664
2,5-Dinitrophenol	Methanol	S-3980
3-Nitrophenol	Methanol	S-2728
2,3,4-Trichlorophenol	Methanol	S-3625
2,3,5-Trichlorophenol	Methanol	S-3630
2,3,6-Trichlorophenol	Methanol	S-3635

Helpful Hint:

In CLPS-I the Perylene-d₁₂ may crystallize and drop from solution when stored at subzero temperatures. It can be redissolved by sonication.

Phenolics Mix B**7 Certified Components:**

2,6-Dichlorophenol	4-Methylphenol
2-Methylphenol	2,3,4,6-Tetrachlorophenol
3-Methylphenol	2,4,5-Trichlorophenol
Dinoseb (2-sec-Butyl-4,6-dinitrophenol)	

1 mL @ 2,000 µg/mL in Isopropanol

Catalog#: 8040-B**Surrogate Standard****1 Certified Component:**

2,4-Dibromophenol

1 mL @ 1,000 µg/mL in Methanol

Catalog#: S-5148**Internal Standard****2 Certified Components:**

2,5-Dibromotoluene
2,2',5,5'-Tetrabromobiphenyl

1 mL @ 1,000 µg/mL in Isopropanol

Catalog#: 8041-I**Internal Standards****1 Certified Component:**

2,5-Dibromotoluene

1 mL @ 1,000 µg/mL in Methanol

Catalog#: S-1251**1 Certified Component:**

2,2',5,5'-Tetrabromobiphenyl

1 mL @ 1,000 µg/mL in Methanol

Catalog#: S-4144**METHOD 8061**

EPA method 8061 is an analytical method for the monitoring of phthalate esters in aqueous and solid samples by GC-MS or GC-ECD.

Phthalate Esters**6 Certified Components:**

bis(2-Ethylhexyl) phthalate	Dimethyl phthalate
Butylbenzyl phthalate	Diethyl phthalate
Di-n-Butyl phthalate	Di-n-Octyl phthalate

1 mL @ 2,000 µg/mL in Methanol

Catalog#: 606-XH**QC Check Solution****6 Certified Components:**

	µg/mL		µg/mL
bis(2-Ethylhexyl)phthalate	50	Diethyl phthalate	25
Butylbenzyl phthalate	10	Dimethyl phthalate	25
Di-n-Butyl phthalate	25	Di-n-Octyl phthalate	50

1 mL in Acetone

Catalog#: 8060-QC**Internal Standard****1 Certified Component:**

Benzyl benzoate

1 mL @ 5,000 µg/mL in Hexane

Catalog#: 8060-I**Surrogate Standard****3 Certified Components:**

Dibenzyl phthalate
Diphenyl isophthalate
Diphenyl phthalate

1 mL @ 500 µg/mL in Hexane

Catalog#: 8060-S**Did You Know?**

SPEX CertiPrep's chemists have decades of experience and are available to answer your questions. Submit your questions to askachemist@spex.com and receive a free gift if we post your question on our website.

Method 8061 Additional Analytes

Component @ 1,000 ug/mL:	Matrix	Catalog#
Bis(2-n-butoxyethyl)phthalate	Methanol	S-4152
Bis(2-ethoxyethyl)phthalate	Methanol	S-4550
Bis(2-methoxyethyl) phthalate	Methanol	S-4156
Bis(4-methyl-2-pentyl)phthalate	Methanol	S-4154
Diamyl phthalate	Methanol	S-4157
Dicyclohexyl phthalate	Methanol	S-4151
Di-n-hexyl phthalate	Methanol	S-4155
Diisobutyl phthalate	Methanol	S-4150
Dinonyl phthalate	Methanol	S-4153
Hexyl 2-ethylhexyl phthalate	Methanol	S-4158

METHOD 8100

EPA method 8100 is an analytical method for the monitoring of PNA hydrocarbons in aqueous and solid samples by GC-FID.

Polynuclear Aromatic Hydrocarbons Mix A

16 Certified Components:

Acenaphthene	Chrysene
Acenaphthylene	Dibenz(a,h)anthracene
Anthracene	Fluoranthene
Benzo(a)anthracene	Fluorene
Benzo(b)fluoranthene	Indeno(1,2,3-cd)pyrene
Benzo(k)fluoranthene	Naphthalene
Benzo(g,h,i)perylene	Phenanthrene
Benzo(a)pyrene	Pyrene

1 mL @ 2,000 µg/mL in Methylene chloride: Benzene

Catalog#: CLPS-B

Polynuclear Aromatic Hydrocarbons Mix B

8 Certified Components:

Benzo(j)fluoranthene	Dibenzo(a,e)pyrene
Dibenz(a,h)acridine	Dibenzo(a,h)pyrene
Dibenz(a,i)acridine	Dibenzo(a,i)pyrene
7H-Dibenzo(c,g)carbazole	3-Methylcholanthrene

1 mL @ 1,000 µg/mL in Methylene chloride: Benzene

Catalog#: 8100-B

Surrogate Standard

2 Certified Components:

2-Fluorobiphenyl
1-Fluoronaphthalene

1 mL @ 2,000 µg/mL in Methylene chloride

Catalog#: 8100-S

Did You Know?

SPEX CertiPrep has many more individual standards that can be seen online at www.spexcertiprep.com

METHOD 8121

EPA method 8121 is an analytical method for the monitoring of chlorinated hydrocarbons in environmental and waste samples by GC-ECD.

**Method 8120/8120A
Chlorinated Hydrocarbons****9 Certified Components:**

2-Chloronaphthalene	Hexachlorobutadiene
1,2-Dichlorobenzene	Hexachlorocyclopentadiene
1,3-Dichlorobenzene	Hexachloroethane
1,4-Dichlorobenzene	1,2,4-Trichlorobenzene
Hexachlorobenzene	

1 mL @ 2,000 µg/mL in Isooctane

Catalog#: 612-X

Method 8121 Chlorinated Hydrocarbons QC Mix**22 Certified Components:**

Benzal Chloride	gamma-BHC
Benzotrichloride	delta-BHC
Benzyl Chloride	Hexachlorocyclopentadiene
2-Chloronaphthalene	Hexachloroethane
1,2-Dichlorobenzene	Pentachlorobenzene
1,3-Dichlorobenzene	1,2,3,4-Tetrachlorobenzene
1,4-Dichlorobenzene	1,2,4,5-Tetrachlorobenzene
Hexachlorobenzene	1,2,3,5-Tetrachlorobenzene
Hexachlorobutadiene	1,2,4-Trichlorobenzene
alpha-BHC	1,2,3-Trichlorobenzene
beta-BHC	1,3,5-Trichlorobenzene

1 mL @ 100 µg/mL in Acetone

Catalog#: 8121-B

3-Component Internal Standard**3 Certified Components:**

2,5-Dibromotoluene
α,α-Dibromo-m-xylene
1,3,5-Tribromobenzene

1 mL @ 500 µg/mL in Acetone

Catalog#: 8121-I

Single-Component Internal Standard**1 Certified Component:**

1,3,5-Tribromobenzene

1 mL @ 1,000 µg/mL in Acetone

Catalog#: S-3552

Surrogate Standard**3 Certified Components:**

α,2,6-Trichlorotoluene
2,3,4,5,6-Pentachlorotoluene
1,4-Dichloronaphthalene

1 mL @ 1,000 µg/mL in Acetone

Catalog#: 8121-S

METHOD 8270

EPA method 8270 is a general analytical method for the monitoring of SVOA in environmental and waste samples by GC-MS.

**"Big-Mix" - Base Neutral & Acid
Combination Calibration Standard**

Semivolatile Organics Mix with 76 Certified Components

76 Certified Components:

Acenaphthene	2,6-Dinitrotoluene
Acenaphthylene	4,6-Dinitro-2-methylphenol
Aniline	Diphenylamine**
Anthracene	Di-n-butyl phthalate
Azobenzene	Di-n-octyl phthalate
*Benz(a)anthracene	bis-(2-Ethylhexyl)adipate
Benzo(a)pyrene	Fluoranthene
Benzo(b)fluoranthene	Fluorene
bis(2-Ethylhexyl)phthalate	Hexachlorobenzene
Benzo(g,h,i)perylene	Hexachlorobutadiene
Benzo(k)fluoranthene	Hexachlorocyclopentadiene
Benzyl alcohol	Hexachloroethane
4-Bromodiphenyl ether	Indeno(1,2,3-c,d)pyrene
Butylbenzyl phthalate	Isophorone
Carbazole	1-Methylnaphthalene
4-Chloroaniline (p-Chloroaniline)	2-Methylnaphthalene
bis(2-Chloroethoxy)methane	2-Methylphenol***
bis(2-Chloroethyl)ether	3-Methylphenol***
bis(2-Chloro-1-methylethyl) ether	4-Methylphenol
2-Chloronaphthalene	Naphthalene
2-Chlorophenol	2-Nitroaniline
4-Chlorophenyl-phenyl ether	3-Nitroaniline
4-Chloro-3-methylphenol	4-Nitroaniline
Chrysene	Nitrobenzene
Dibenzofuran	2-Nitrophenol
Dibenz(a,h)anthracene	4-Nitrophenol
1,2-Dichlorobenzene	N-Nitrosodimethylamine**
1,3-Dichlorobenzene	N-Nitrosodi-n-propylamine
1,4-Dichlorobenzene	Pentachlorophenol
2,4-Dichlorophenol	Phenanthrene
Diethyl phthalate	Phenol
Dimethyl phthalate	Pyrene
2,4-Dimethylphenol	Pyridine
1,2-Dinitrobenzene	2,3,4,6-Tetrachlorophenol
1,3-Dinitrobenzene	2,3,5,6-Tetrachlorophenol
1,4-Dinitrobenzene	1,2,4-Trichlorobenzene
2,4-Dinitrophenol	2,4,5-Trichlorophenol
2,4-Dinitrotoluene	2,4,6-Trichlorophenol

*1,2-Diphenylhydrazine (8270-listed analyte)
decomposes to Azobenzene (mix component)

**N-Nitrosodiphenylamine (8270-listed analyte)
decomposes to Diphenylamine (mix component)

***3-Methylphenol and 4-Methylphenol concentration
each are 500 µg/mL

1 mL @ 1,000 µg/mL in Methylene Chloride

Catalog#: 76-BIG-MIX

Method 8270 Singles

Component @ 1,000 ug/mL:	Matrix	Catalog#
2-Acetylaminofluorene	Methanol	S-130
1-Acetyl-2-thiourea	Methanol	S-160
2-Aminoanthraquinone	MeCl ₂ : Benzene:THF	S-220
Aminoazobenzene	Methanol	S-3065
3-Amino-9-ethylcarbazole	Methanol	S-0226
Anilazine	Methanol	S-275
o-Anisidine	Methanol	S-285
Aramite	MeCl ₂	S-305
Barban	Methanol	S-375
p-Benzoquinone	Methanol	S-420
Bromoxynil	Methanol	S-575
Carbophenothion	Methanol	S-755
Chlorfenvinphos	Acetone	S-785
5-Chloro-2-methylaniline	Methanol	S-0941
3-(Chloromethyl)pyridine Hydrochloride	Methanol	S-3116
4-Chloro-1, 2-phenylenediamine	Acetonitrile	S-954
4-Chloro-1, 3-phenylenediamine	Acetone	S-907
p-Cresidine	Methanol	S-2415
2-Cyclohexyl-4, 6-dinitro-phenol	MeCl ₂	S-1029
2,4-Diaminotoluene	Methanol	S-1160
Dibenzo(a,e)pyrene	MeCl: Benzene	S-1200
1,2-Dibromo-3-chloropropane	Methanol	S-1255
Dichlone	Methanol	S-1275
Dichlorovos	Methanol	S-1475
Diethylstilbestrol	Methanol	S-1530

Component @ 1,000 ug/mL:	Matrix	Catalog#
Diethyl sulfate	Methanol	S-1520
3,3'-Dimethoxybenzidine	Methanol	S-1565
a,a-Dimethylphenethylamine	Methanol	S-3899
Dinocap	Methanol	S-1705
5,5-Diphenylhydantoin	Methanol	S-1745
Ethyl carbamate	Methanol	S-3785
2-Fluorobiphenyl (surr)	Methanol	S-2045
2-Fluorophenol (surr)	Methanol	S-2050
Hexachlorophene	MeCl ₂	S-2160
Hexamethylphosphoramide	Methanol	S-2185
Hydroquinone	Methanol	S-2235
Kepone	Methanol	S-2340
Leptophos	Methanol	S-2345
Maleic anhydride	Methanol	S-2357
Mestranol	Methanol	S-2369
4,4'-Methylenebis (2-chloroaniline)	Methanol	S-5941
4,4'-Methylenebis (N,N-dimethyl-aniline)	Methanol	S-1661
Mirex	Hexane:Toluene	S-2635
Naled	MeCl ₂	S-2650
Nicotine	Methanol	S-2680
5-Nitroacenaphthene	Methanol	S-2685
5-Nitro-o-anisidine	Methanol	S-2420
4-Nitrobiphenyl	Methanol	S-2715
Nitrofen	Methanol	S-2720
4,4'-Oxydianiline	Methanol	S-240
Phenacetin	MeCl ₂	S-150

Component @ 1,000 µg/mL:	Matrix	Catalog#
1,4-Phenylenediamine	Methanol	S-3070
Phthalic anhydride	Methanol	S-3100
Propylthiouracil	Methanol	S-2242
Resorcinol	Methanol	S-3250
Strychnine	Methanol	S-3295
Tetrachlorvinphos	Acetone	S-3425
Tetraethyl dithiopyrophosphate	Methanol	S-3455
Tetraethyl pyrophosphate	Methanol	S-3315
Thiophenol (Benzenethiol)	Methanol	S-3495
Toluene diisocyanate	Methanol	S-3530
Trifluralin	Methanol	S-3715
2,4,5-Trimethylaniline	Methanol	S-3718
Trimethyl phosphate	Methanol	S-3740
1,3,5-Trinitrobenzene	Methanol	S-3760
Tris(2,3-dibromopropyl) phosphate	MeCl ₂	S-3773

METHOD 8270C

"SHORT LIST" ORIGINAL FORMULATIONS

BIG-BN-2 - Base Neutral & Acid Combination Calibration Standard

Semivolatile Calibration Standard containing all 49 base-neutrals contained in blends: CLPS-B, CLPS-C, CLPS-D, and CLPS-G at 2,000 µg/mL

49 Certified Components:

Acenaphthene	Dimethyl phthalate
Acenaphthylene	Di-n-butyl phthalate
Anthracene	2,4-Dinitrotoluene
Benzo(a)anthracene	2,6-Dinitrotoluene
Benzo(a)pyrene	Di-n-octyl phthalate
Benzo(b)fluoranthene	Fluoranthene
Benzo(g,h,i)perylene	Fluorene
Benzo(k)fluoranthene	Hexachlorobenzene
Benzyl alcohol	Hexachlorobutadiene
bis(2-Chloroethoxy)methane	Hexachlorocyclopentadiene
bis(2-Chloroethyl)ether	Hexachloroethane
bis(2-Chloroisopropyl)ether	Indeno(1,2,3-cd)pyrene
bis(2-Ethylhexyl)phthalate	Isophorone
4-Bromophenyl phenyl ether	2-Methylnaphthalene
Butylbenzyl phthalate	Naphthalene
4-Chloroaniline	2-Nitroaniline
2-Chloronaphthalene	3-Nitroaniline
4-Chlorophenyl-phenyl ether	4-Nitroaniline
Chrysene	Nitrobenzene
Dibenz(a,h)anthracene	N-Nitroso-di-n-propylamine
Dibenzofuran	N-Nitrosodiphenylamine
1,2-Dichlorobenzene	Phenanthrene
1,3-Dichlorobenzene	Pyrene
1,4-Dichlorobenzene	1,2,4-Trichlorobenzene
Diethyl phthalate	

1 mL @ 2,000 µg/mL in Methylene chloride:Benzene

Catalog#: BIG-BN-2

5 mL @ 2,000 µg/mL in Methylene chloride:Benzene

Catalog#: BIG-BN-2-5

Did You Know?

On SPEX CertiPrep's website you can search by CAS number or component name on our site search tool and on our Custom Standards Request Form for singles and mixes.

HICAL-ACIDS

15 Certified Components:

Benzoic acid	4-Methylphenol (p-Cresol)
4-Chloro-3-methylphenol	Phenol
2-Chlorophenol	4-Nitrophenol
2,4-Dichlorophenol	2-Nitrophenol
2,4-Dimethylphenol	Pentachlorophenol
4,6-Dinitro-2-methylphenol	2,4,5-Trichlorophenol
2,4-Dinitrophenol	2,4,6-Trichlorophenol
2-Methylphenol (o-Cresol)	

1 mL @ 2,000 µg/mL in Methylene chloride

Catalog#: HICAL-ACIDS

5 mL @ 2,000 µg/mL in Methylene chloride

Catalog#: HICAL-ACIDS-5

Benzidines Mix

2 Certified Components:

Benzidine
3,3'-Dichlorobenzidine

1 mL @ 2,000 µg/mL in Methanol

Catalog#: 605-X

5 mL @ 2,000 µg/mL in Methanol

Catalog#: 605-X5

Balance Mix - Option A

6 Certified Components:

Aniline	3-Methylphenol (m-Cresol)
Azobenzene	N-Nitrosodimethylamine
Carbazole	Pyridine

1 mL @ 2,000 µg/mL in Methylene chloride

Catalog#: SV-X

5 mL @ 2,000 µg/mL in Methylene chloride

Catalog#: SV-X5

Phenolics Mix

11 Certified Components:

4-Chloro-3-methylphenol	2-Nitrophenol
2-Chlorophenol	4-Nitrophenol
2,4-Dichlorophenol	Pentachlorophenol
2,4-Dimethylphenol	Phenol
4,6-Dinitro-2-methylphenol	2,4,6-Trichlorophenol
2,4-Dinitrophenol	

1 mL @ 2,000 µg/mL in Methylene chloride

Catalog#: CLPS-A

Polynuclear Aromatic Hydrocarbons

16 Certified Components:

Acenaphthene	Chrysene
Acenaphthylene	Phenanthrene
Anthracene	Dibenz(a,h)anthracene
Benzo(a)anthracene	Fluorene
Benzo(a)pyrene	Indeno(1,2,3-cd)pyrene
Benzo(b)fluoranthene	Naphthalene
Benzo(g,h,i)perylene	Pyrene
Benzo(k)fluoranthene	Phenanthrene

1 mL @ 2,000 µg/mL in Methylene chloride: Benzene

Catalog#: CLPS-B

Haloethers & Phthalates

13 Certified Components:

bis(2-Chloroethoxy)methane	Di-n-butyl phthalate
bis(2-Chloroethyl)ether	Diethyl phthalate
bis(2-Chloroisopropyl)ether	Dimethyl phthalate
bis(2-Ethylhexyl)phthalate	Di-n-Octyl phthalate
4-Bromophenyl phenyl ether	N-Nitroso-di-n-propylamine
Butylbenzyl phthalate	N-Nitrosodiphenylamine
4-Chlorophenyl-phenyl ether	

1 mL @ 2,000 µg/mL in Methylene chloride

Catalog#: CLPS-C

Chlorinated/Nitrated Hydrocarbons Mix

13 Certified Components:

2-Chloronaphthalene	Hexachlorobutadiene
1,2-Dichlorobenzene	Hexachlorocyclopentadiene
1,3-Dichlorobenzene	Hexachloroethane
1,4-Dichlorobenzene	Isophorone
2,4-Dinitrotoluene	Nitrobenzene
2,6-Dinitrotoluene	1,2,4-Trichlorobenzene
Hexachlorobenzene	

1 mL @ 2,000 µg/mL in Methylene chloride

Catalog#: CLPS-D

CLP Mix G

7 Certified Components:

Benzyl alcohol	2-Nitroaniline
4-Chloroaniline	3-Nitroaniline
Dibenzofuran	4-Nitroaniline
2-Methylnaphthalene	

1 mL @ 2,000 µg/mL in Methylene chloride

Catalog#: CLPS-G

Appendix IX Mix A**33 Certified Components:**

2-Acetyl aminofluorene	N-Nitrosodiethylamine
4-Aminobiphenyl	N-Nitrosodimethylamine
Aniline	N-Nitroso-di-n-butylamine
1-Chloronaphthalene	N-Nitrosomethylethylamine
Dibenz(a,j)acridine	N-Nitrosomorpholine
p-Dimethylaminoazobenzene	N-Nitrosopiperidine
7,12-Dimethylbenzanthracene	N-Nitrosopyrrolidine
3,3'-Dimethylbenzidine	5-Nitro-o-toluidine
m-Dinitrobenzene	2-Picoline
p-Dinitrobenzene	Pentachloronitrobenzene
Diphenylamine	Phenacetin
Ethyl methanesulfonate	p-Phenylenediamine
3-Methylcholanthrene	Pronamide
Methyl methanesulfonate	Pyridine
1-Naphthylamine	Thionazin
2-Naphthylamine	o-Toluidine
4-Nitroquinoline-1-oxide	

1 mL @ 2,000 µg/mL in

Methylene chloride:Acetone:Benzene

Catalog#: 8270-IXA**Appendix IX Mix B****4 Certified Components:**

2,6-Dichlorophenol	3-Methylphenol(m-cresol)
Dinoseb	2,3,4,6-Tetrachlorophenol

1 mL @ 2,000 µg/mL in

Methylene chloride:Acetone:Benzene

Catalog#: 8270-IXB**Appendix IX Mix C****22 Certified Components:**

Acetophenone	Methapyrilene
Azobenzene	Methyl parathion
Chlorobenzilate	1,4-Naphthoquinone
Diallate	Parathion
Dimethoate	Pentachlorobenzene
Disulfoton	Pentachloroethane
Famphur	Phorate
Hexachlorophene	Safrole
Hexachloropropene	Sulfotep
Isodrin	1,2,4,5-Tetrachlorobenzene
Isosafrole	o,o,o-Triethylphosphorothioate

1 mL @ 2,000 µg/mL in

Methylene chloride:Acetone:Benzene

Catalog#: 8270-IXC**Organochlorine Pesticides****18 Certified Components:**

Aldrin	Endosulfan I
α-BHC	Endosulfan II
β-BHC	Endosulfan sulfate
γ-BHC (Lindane)	Endrin
δ-BHC	Endrin aldehyde
4,4'-DDD	Endrin ketone
4,4'-DDE	Heptachlor
4,4'-DDT	Heptachlor epoxide (Isomer B)
Dieldrin	Methoxychlor

1 mL @ 2,000 µg/mL in Benzene

Catalog#: 625-PH**Appendix IX Organophosphorous/
Nitrogen Pesticides and Herbicides****24 Certified Components:**

Azinphos methyl	Fenthion
Captafol	Malathion
Captan	Mevinphos
Carbaryl	Mexacarbate
Carbofuran	Monocrotophos
Coumaphos	Octamethyl pyrophosphoramidate (OMPA, Schraden)
Crotoxyphos	Phosalone
Demeton-(O+S)	Phosmet
Dicrotophos	Phosphamidon
Dioxathion	Sulfallate
EPN	Terbufos
Ethion	
Fensulfothion	

1 mL @ 2,000 µg/mL in Acetone

Catalog#: 8270-IXJ**Chlorinated Hydrocarbons****13 Certified Components:**

2-Chloronaphthalene	Hexachloroethane
1,2-Dichlorobenzene	Hexachloropropane
1,3-Dichlorobenzene	Pentachlorobenzene
1,4-Dichlorobenzene	Pentachloroethane
Hexachlorobenzene	1,2,4,5-Tetrachlorobenzene
Hexachlorobutadiene	1,2,4-Trichlorobenzene
Hexachlorocyclopentadiene	

1 mL @ 2,000 µg/mL in Methylene chloride

Catalog#: 8270-AF-B

Nitrosamines

9 Certified Components:

N-Nitroso-di-n-butylamine	N-Nitrosomethylethylamine
N-Nitrosodiethylamine	N-Nitrosomorpholine
N-Nitrosodimethylamine	N-Nitrosopiperidine
N-Nitrosodiphenylamine	N-Nitrosopyrrolidine
N-Nitrosodi-n-propylamine	

1 mL @ 2,000 µg/mL in Methylene chloride

Catalog#: 8270-AF-C

Phenols

11 Certified Components:

4-Chloro-3-methylphenol	2-Nitrophenol
2-Chlorophenol	4-Nitrophenol
2,4-Dichlorophenol	Pentachlorophenol
2,4-Dimethylphenol	Phenol
4,6-Dinitro-2-methylphenol	2,4,6-Trichlorophenol
2,4-Dinitrophenol	

1 mL @ 2,000 µg/mL in Methylene chloride

Catalog#: 8270-AF-L

Polynuclear Aromatic Hydrocarbons

16 Certified Components:

Acenaphthene	Chrysene
Acenaphthylene	Dibenz(a,h)anthracene
Anthracene	Fluoranthene
Benzo(a)anthracene	Fluorene
Benzo(a)pyrene	Indeno(1,2,3-cd)pyrene
Benzo(b)fluoranthene	Naphthalene
Benzo(g,h,i)perylene	Phenanthrene
Benzo(k)fluoranthene	Pyrene

1 mL @ 2,000 µg/mL in MeCl₂:Benzene

Catalog#: 8270-AF-M

Did You Know?

SPEX CertiPrep has a library of YouTube webinars on a variety of interesting subjects such as trace metals in wine, analysis of phthalates and BPA in children's toys, and clean laboratory techniques.

View these videos at
www.spexcertiprep.com/knowledge-base/webinars

"LONG LIST" APPENDIX IX COMPOUNDS - ALTERNATIVE FORMULATIONS

Polynuclear Aromatic Hydrocarbons

2 Certified Components:

7,12-Dimethylbenz[a]anthracene
3-Methylcholanthrene

1 mL @ 2,000 µg/mL in

1:1 Methylene chloride:Benzene

Catalog#: 8270-AF-F

Organophosphorous Pesticides

9 Certified Components:

Dimethoate	o,o,o-Triethyl-phosphorothionate
Disulfoton	Methyl parathion
Famfur	Parathion
Thionazin	Phorate
Sulfotep	

1 mL @ 2,000 µg/mL in Methylene chloride

Catalog#: 8270-AF-I

Organochlorine Pesticides

17 Certified Components:

Aldrin	Endosulfan I
α-BHC	Endosulfan II
β-BHC	Endosulfan sulfate
γ-BHC (Lindane)	Endrin
δ-BHC	Endrin aldehyde
4,4'-DDD	Heptachlor
4,4'-DDE	Heptachlor epoxide
4,4'-DDT	Methoxychlor
Dieldrin	

1 mL @ 2,000 µg/mL in Acetone

Catalog#: 8270-N

Toxaphene Stock Standard

1 Certified Component:

Toxaphene

1 mL @ 200 µg/mL in Hexane

Catalog#: TOX-X

1 mL @ 1,000 µg/mL in Hexane

Catalog#: S-3535

Chlordane Stock Standard**1 Certified Component:**

Technical Chlordane

1 mL @ 200 µg/mL in Hexane

Catalog#: CDANE-X

1 mL @ 1,000 µg/mL in Hexane

Catalog#: S-780**Decachlorobiphenyl Stock Standard****1 Certified Component:**

Decachlorobiphenyl

1 mL @ 5,000 µg/mL in Toluene

Catalog#: DCBP-XH**Aroclor Mix 1**

Mix one contains the following Aroclors:

4 Certified Components:

Aroclor 1016

Aroclor 1232

Aroclor 1248

Aroclor 1260

1 mL @ 200 µg/mL in Hexane

Catalog#: PCB-M1**Aroclor Mix 2**

Mix two contains the following Aroclors:

3 Certified Components:

Aroclor 1221

Aroclor 1254

Aroclor 1242

1 mL @ 200 µg/mL in Hexane

Catalog#: PCB-M2**Individual Aroclors**

Two concentrations available:

200 µg/mL and 1,000 µg/mL at 1 mL each in Hexane.

Concentration	Certified Components	Catalog#
200 µg/mL	1	PCB-1016
1,000 µg/mL	1	PCB-1016H
200 µg/mL	1	PCB-1221
1,000 µg/mL	1	PCB-1221H
200 µg/mL	1	PCB-1232
1,000 µg/mL	1	PCB-1232H
200 µg/mL	1	PCB-1242
1,000 µg/mL	1	PCB-1242H
200 µg/mL	1	PCB-1248
1,000 µg/mL	1	PCB-1248H
200 µg/mL	1	PCB-1254
1,000 µg/mL	1	PCB-1254H
200 µg/mL	1	PCB-1260
1,000 µg/mL	1	PCB-1260H
200 µg/mL	1	PCB-1262
1,000 µg/mL	1	PCB-1262H
200 µg/mL	1	PCB-1268
1,000 µg/mL	1	PCB-1268H

Did you Know?

SPEX CertiPrep offers a number of informative Application Notes on our website with topics ranging from "Analysis of Laboratory Water for BPA and Phthalates" to "Analysis of Lipstick for Toxic Elements Using ICP-MS."

Base/Neutral Surrogate

3 Certified Components:

2-Fluorobiphenyl
Nitrobenzene-d₅
Terphenyl-d₁₄

1 mL @ 1,000 µg/mL in
50:50 Methylene chloride:Acetone

Catalog#: CLPS-SB

5 mL @ 1,000 µg/mL in
50:50 Methylene chloride:Acetone

Catalog#: CLPS-SB5

Acid Surrogate

3 Certified Components:

2-Fluorophenol
Phenol-d₅
2,4,6-Tribromophenol

1 mL @ 2,000 µg/mL in Methanol

Catalog#: CLPS-SA

5 mL @ 2,000 µg/mL in Methanol

Catalog#: CLPS-SA5

Internal Standard

6 Certified Components:

Acenaphthene-d₁₀ Naphthalene-d₈
Chrysene-d₁₂ Perylene-d₁₂
1,4-Dichlorobenzene-d₄ Phenanthrene-d₁₀

1 mL @ 4,000 µg/mL in Methylene chloride:Benzene

Catalog#: CLPS-I

2 mL @ 2,000 µg/mL in Methylene chloride:Benzene

Catalog#: CLPS-I2

Acids Matrix Spike

5 Certified Components:

4-Chloro-3-Methylphenol
2-Chlorophenol
4-Nitrophenol
Pentachlorophenol
Phenol

1 mL @ 2,000 µg/mL in Methylene chloride

Catalog#: CLPS-MSA

5 mL @ 2,000 µg/mL in Methylene chloride

Catalog#: CLPS-MSA5

Base/Neutrals Matrix Spike

6 Certified Components:

Acenaphthene N-Nitroso-di-n-propylamine
1,4-Dichlorobenzene Pyrene
2,4-Dinitrotoluene 1,2,4-Trichlorobenzene

1 mL @ 2,000 µg/mL in Methylene chloride

Catalog#: CLPS-MSB

Base/Neutrals Tinted Matrix Spike

7 Certified Components:

1,2,4-Trichlorobenzene Bromophenol blue
1,4-Dichlorobenzene N-Nitrosodi-n-propylamine
2,4-Dinitrotoluene Pyrene
Acenaphthene

1 mL @ 1,000 µg/mL in Methanol

Catalog#: CLPS-MSB-TI

GC-MS Tuning Standard

1 Certified Component:

Decafluorotriphenylphosphine

1 mL @ 2,500 µg/mL in Methanol

Catalog#: CLPS-T

4-Component GC-MS Tuning Standard

4 Certified Components:

Decafluorotriphenylphosphine
4,4-DDT
Benzidine
Pentachlorophenol

1 mL @ 2,500 µg/mL in Methylene chloride

Catalog#: CLPS-T4

Base/Neutral Fraction Calibration Check Compounds

7 Certified Components:

Acenaphthene Fluoranthene
Benzo(a)pyrene Hexachlorobutadiene
1,4-Dichlorobenzene N-Nitroso-di-n-phenylamine
Di-n-octyl phthalate

1 mL @ 2,000 µg/mL in Methylene chloride

Catalog#: 8270-CCB

Skinner List Acid Extractables**4 Certified Analytes:**

o-Cresol	2,4-Dinitrophenol
m-Cresol	4-Nitrophenol
p-Cresol	Phenol
2,4-Dimethylphenol	Thiophenol

1 mL @ 2,000 µg/mL in Methanol

Catalog#: SKINNER-AE**Skinner List Semivolatiles****25 Certified Analytes:**

Anthracene	1,4 Dichlorobenzene
Benzo(a)anthracene	Di(n)octyl phthalate
Benzo(a)pyrene	Dibenz(a,h)Anthracene
Benzo(b)fluoranthene	Diethyl phthalate
Benzo(k)fluoranthene	Dimethyl phthalate
Bis(2-ethylhexyl)phthalate	Fluoranthene
Butylbenzyl phthalate	Indene
Chrysene	1-Methylnaphthalene
Di(n)butyl phthalate	Naphthalene
7,12-Dimethyl-benz(a)anthracene	Phenanthrene
Pyrene	Pyridine
1,2-Dichlorobenzene	Quinoline
1,3-Dichlorobenzene	

1 mL @ 2,000 µg/mL in Methylene chloride

Catalog#: SKINNER-SV**METHOD 8310**

EPA method 8370 is an analytical method for the monitoring of PNA hydrocarbons in groundwater and waste samples by HPLC using UV and fluorescence detectors.

PAH Calibration Mix**16 Certified Components:**

Acenaphthene	Chrysene
Acenaphthylene	Dibenzo(a,h)anthracene
Anthracene	Fluoranthene
Benzo(a)anthracene	Fluorene
Benzo(a)pyrene	Indeno(1,2,3-cd)pyrene
Benzo(b)fluoranthene	Naphthalene
Benzo(g,h,i)perylene	Phenanthrene
Benzo(k)fluoranthene	Pyrene

1 mL @ 500 µg/mL in Acetonitrile

Catalog#: 8310-A**PAH Quality Control Mix****16 Certified Components:**

	µg/mL		µg/mL
Acenaphthene	100	Chrysene	50
Acenaphthylene	100	Dibenzo(a,h)anthracene	10
Anthracene	100	Fluoranthene	5
Benzo(a)anthracene	10	Fluorene	100
Benzo(a)pyrene	10	Indeno(1,2,3-cd)pyrene	10
Benzo(b)fluoranthene	5	Naphthalene	100
Benzo(g,h,i)perylene	10	Phenanthrene	100
Benzo(k)fluoranthene	10	Pyrene	10

1 mL in Acetonitrile

Catalog#: 8310-QCM**Surrogate Standard****1 Certified Component:**

Decafluorobiphenyl

1 mL @ 100 µg/mL in Acetonitrile

Catalog#: 8310-I

CLP SERIES – SEMIVOLATILES

The US EPA retains analytical services through the Contract Lab Program (CLP). The CLP follows detailed SOPs derived from EPA methods and SW-846. The CLP Semivolatile Organic Analysis method is an analytical method for the analysis of aqueous or solid samples for SVOCs by GC-MS.

CLPS-SOM2A

65 Certified Components:

1,1'-Biphenyl	Benzo(b)fluoranthene
1,2,4,5-Tetrachlorobenzene	Benzo(g,h,i)perylene
4-Chloroaniline	Benzo(k)fluoranthene
2,3,4,6-Tetrachlorophenol	Bis(2-chloro-1-methylethyl) ether
2,4,5-Trichlorophenol	Bis(2-chloroethoxy)methane
2,4,6-Trichlorophenol	Bis(2-chloroethyl)ether
2,4-Dichlorophenol	Bis(2-ethylhexyl)phthalate
2,4-Dimethylphenol	Butylbenzyl phthalate
2,4-Dinitrophenol	Carbazole
2,4-Dinitrotoluene	Chrysene
2,6-Dinitrotoluene	Dibenz(a,h)anthracene
2-Chloronaphthalene	Dibenzofuran
2-Chlorophenol	Diethyl phthalate
2-Methylnaphthalene	Dimethyl phthalate
2-Methylphenol	Di-n-butyl phthalate
2-Nitroaniline	Di-n-octyl phthalate
2-Nitrophenol	Fluoranthene
3,3'-Dichlorobenzidine	Fluorene
3-Methylphenol*	Hexachlorobenzene
3-Nitroaniline	Hexachlorobutadiene
4,6-Dinitro-2-methylphenol	Hexachlorocyclopentadiene
4-Bromodiphenyl ether	Hexachloroethane
4-Chloro-3-methylphenol	Indeno(1,2,3-c,d)pyrene
4-Chlorophenyl-phenyl ether	Isophorone
4-Methylphenol*	Naphthalene
4-Nitroaniline	Nitrobenzene
4-Nitrophenol	N-Nitroso-di-n-propylamine
Acenaphthene	N-Nitrosodiphenylamine
Acenaphthylene	Pentachlorophenol
Acetophenone	Phenanthrene
Anthracene	Phenol
Benz(a)anthracene	Pyrene
Benzo(a)pyrene	

*3-methylphenol and 4-methylphenol concentration is 500 µg/mL.

1 mL @ 1,000 µg/mL in Methylene chloride

Catalog#: CLPS-SOM2A

CLPS-SOM2B

3 Certified Components:

Benzaldehyde
Caprolactam
Atrazine

1 mL @ 1,000 µg/mL in Methylene chloride

Catalog#: CLPS-SOM2B

SOM 02.0 Deuterated Monitoring Compounds Standard Spiking Solution

16 Certified Components:

Acenaphthylene-d8	4,6-Dinitro-2-methylphenol-d2
Anthracene-d10	Fluorene-d10
Benzo(a)pyrene-d12	4-Methylphenol-d8
4-Chloroaniline-d4	Nitrobenzene-d5
Bis(2-chloroethyl)ether-d8	2-Nitrophenol-d4
2-Chlorophenol-d4	4-Nitrophenol-d4
2,4-Dichlorophenol-d3	Phenol-d5
Dimethylphthalate-d6	Pyrene-d10

1 mL @ 2,000 µg/mL in Methylene chloride

Catalog#: CLPS-SOM-ISA

SOM 02.0 Selected Ion Monitoring

2 Certified Components:

Fluoranthene-d10
2-Methylnaphthalene-d10

1 mL @ 2,000 µg/mL in Methylene chloride

Catalog#: CLPS-SOM-ISB

Base Neutral Matrix Spike

4 Certified Components:

Acenaphthene
2,4-Dinitrotoluene
N-Nitroso-di-n-propylamine
Pyrene

1 mL @ 1,000 µg/mL in Methanol

Catalog#: CLPS-SOM-MSB

Acid Extractable Matrix Spikes

5 Certified Components:

4-Chloro-3-methylphenol
2-Chlorophenol
4-Nitrophenol
Pentachlorophenol
Phenol

1 mL @ 2,000 µg/mL in Methanol

Catalog#: CLPS-MSA

5 mL @ 2,000 µg/mL in Methanol

Catalog#: CLPS-MSA5

**"Big-Mix" - Base Neutral & Acid
Combination Calibration Standard**

Semivolatile Organics Mix with 76 Certified Components

76 Certified Components:

Acenaphthene	2,6-Dinitrotoluene
Acenaphthylene	4,6-Dinitro-2-methylphenol
Aniline	Diphenylamine**
Anthracene	Di-n-butyl phthalate
Azobenzene	Di-n-octyl phthalate
*Benz(a)anthracene	bis-(2-Ethylhexyl)adipate
Benzo(a)pyrene	Fluoranthene
Benzo(b)fluoranthene	Fluorene
bis(2-Ethylhexyl)phthalate	Hexachlorobenzene
Benzo(g,h,i)perylene	Hexachlorobutadiene
Benzo(k)fluoranthene	Hexachlorocyclopentadiene
Benzyl alcohol	Hexachloroethane
4-Bromodiphenyl ether	Indeno(1,2,3-c,d)pyrene
Butylbenzyl phthalate	Isophorone
Carbazole	1-Methylnaphthalene
4-Chloroaniline (p-Chloroaniline)	2-Methylnaphthalene
bis(2-Chloroethoxy)methane	2-Methylphenol***
bis(2-Chloroethyl)ether	3-Methylphenol***
bis(2-Chloro-1-methylethyl) ether	4-Methylphenol
2-Chloronaphthalene	Naphthalene
2-Chlorophenol	2-Nitroaniline
4-Chlorophenyl-phenyl ether	3-Nitroaniline
4-Chloro-3-methylphenol	4-Nitroaniline
Chrysene	Nitrobenzene
Dibenzofuran	2-Nitrophenol
Dibenz(a,h)anthracene	4-Nitrophenol
1,2-Dichlorobenzene	N-Nitrosodimethylamine**
1,3-Dichlorobenzene	N-Nitrosodi-n-propylamine
1,4-Dichlorobenzene	Pentachlorophenol
2,4-Dichlorophenol	Phenanthrene
Diethyl phthalate	Phenol
Dimethyl phthalate	Pyrene
2,4-Dimethylphenol	Pyridine
1,2-Dinitrobenzene	2,3,4,6-Tetrachlorophenol
1,3-Dinitrobenzene	2,3,5,6-Tetrachlorophenol
1,4-Dinitrobenzene	1,2,4-Trichlorobenzene
2,4-Dinitrophenol	2,4,5-Trichlorophenol
2,4-Dinitrotoluene	2,4,6-Trichlorophenol

*1,2-Diphenylhydrazine (8270-listed analyte)
decomposes to Azobenzene (mix component)

**N-Nitrosodiphenylamine (8270-listed analyte)
decomposes to Diphenylamine (mix component)

***3-Methylphenol and 4-Methylphenol concentration
each are 500 µg/mL

1 mL @ 1,000 µg/mL in Methylene chloride

Catalog#: 76-BIG-MIX

**BIG-BN-2 - Base Neutral & Acid
Combination Calibration Standard**

Semivolatile Calibration Standard containing all 49
base-neutrals contained in blends: CLPS-B, CLPS-C,
CLPS-D, and CLPS-G at 2,000 µg/mL

49 Certified Components:

Acenaphthene	Dimethyl phthalate
Acenaphthylene	Di-n-butyl phthalate
Anthracene	2,4-Dinitrotoluene
Benzo(a)anthracene	2,6-Dinitrotoluene
Benzo(a)pyrene	Di-n-octyl phthalate
Benzo(b)fluoranthene	Fluoranthene
Benzo(g,h,i)perylene	Fluorene
Benzo(k)fluoranthene	Hexachlorobenzene
Benzyl alcohol	Hexachlorobutadiene
bis(2-Chloroethoxy)methane	Hexachlorocyclopentadiene
bis(2-Chloroethyl)ether	Hexachloroethane
bis(2-Chloroisopropyl)ether	Indeno(1,2,3-cd)pyrene
bis(2-Ethylhexyl)phthalate	Isophorone
4-Bromophenyl phenyl ether	2-Methylnaphthalene
Butylbenzyl phthalate	Naphthalene
4-Chloroaniline	2-Nitroaniline
2-Chloronaphthalene	3-Nitroaniline
4-Chlorophenyl-phenyl ether	4-Nitroaniline
Chrysene	Nitrobenzene
Dibenz(a,h)anthracene	N-Nitroso-di-n-propylamine
Dibenzofuran	N-Nitrosodiphenylamine
1,2-Dichlorobenzene	Phenanthrene
1,3-Dichlorobenzene	Pyrene
1,4-Dichlorobenzene	1,2,4-Trichlorobenzene
Diethyl phthalate	

1 mL @ 2,000 µg/mL in Methylene chloride: Benzene

Catalog#: BIG-BN-2

5 mL @ 2,000 µg/mL in Methylene chloride: Benzene

Catalog#: BIG-BN-2-5

HICAL-ACIDS

15 Certified Components:

Benzoic acid	4-Methylphenol (p-Cresol)
4-Chloro-3-methylphenol	Phenol
2-Chlorophenol	4-Nitrophenol
2,4-Dichlorophenol	2-Nitrophenol
2,4-Dimethylphenol	Pentachlorophenol
4,6-Dinitro-2-methylphenol	2,4,5-Trichlorophenol
2,4-Dinitrophenol	2,4,6-Trichlorophenol
2-Methylphenol (o-Cresol)	

1 mL @ 2,000 µg/mL in Methylene chloride

Catalog#: HICAL-ACIDS

5 mL @ 2,000 µg/mL in Methylene chloride

Catalog#: HICAL-ACIDS-5

Benzidines Mix

2 Certified Components:

Benzidine
3,3'-Dichlorobenzidine

1 mL @ 2,000 µg/mL in Methanol

Catalog#: 605-X

5 mL @ 2,000 µg/mL in Methanol

Catalog#: 605-X5

Balance Mix - Option A

6 Certified Components:

Aniline	3-Methylphenol (m-Cresol)
Azobenzene	N-Nitrosodimethylamine
Carbazole	Pyridine

1 mL @ 2,000 µg/mL in Methylene chloride

Catalog#: SV-X

5 mL @ 2,000 µg/mL in Methylene chloride

Catalog#: SV-X5

Balance Mix - OLM04.1

5 Certified Components:

Acetophenone	Benzaldehyde
Atrazine	Caprolactam
1,1'-Biphenyl	

1 mL @ 2,000 µg/mL in Acetone

Catalog#: SV-041

SPECIFIC ANALYTE MIXES

Phenolics

11 Certified Components:

4-Chloro-3-methylphenol	2-Nitrophenol
2-Chlorophenol	4-Nitrophenol
2,4-Dichlorophenol	Pentachlorophenol
2,4-Dimethylphenol	Phenol
4,6-Dinitro-2-methylphenol	2,4,6-Trichlorophenol
2,4-Dinitrophenol	

1 mL @ 2,000 µg/mL in Methylene chloride

Catalog#: CLPS-A

Polynuclear Aromatic Hydrocarbons

16 Certified Components:

Acenaphthene	Dibenz(a,h)anthracene
Acenaphthylene	Chrysene
Anthracene	Fluoranthene
Benzo(a)anthracene	Fluorene
Benzo(a)pyrene	Indeno(1,2,3-cd)pyrene
Benzo(b)fluoranthene	Naphthalene
Benzo(g,h,i)perylene	Phenanthrene
Benzo(k)fluoranthene	Pyrene

1 mL @ 2,000 µg/mL in Methylene chloride: Benzene

Catalog#: CLPS-B

Haloethers & Phthalates

13 Certified Components:

bis(2-Chloroethoxy)methane	Di-n-butyl phthalate
bis(2-Chloroethyl)ether	Diethyl phthalate
bis(2-Chloroisopropyl)ether	Dimethyl phthalate
bis(2-Ethylhexyl)phthalate	Di-n-Octyl phthalate
4-Bromophenyl phenyl ether	N-Nitroso-di-n-propylamine
Butylbenzyl phthalate	N-Nitrosodiphenylamine
4-Chlorophenyl-phenyl ether	

1 mL @ 2,000 µg/mL in Methylene chloride

Catalog#: CLPS-C

Chlorinated/Nitrated Hydrocarbons Mix

13 Certified Components:

2-Chloronaphthalene	Hexachlorobutadiene
1,2-Dichlorobenzene	Hexachlorocyclopentadiene
1,3-Dichlorobenzene	Hexachloroethane
1,4-Dichlorobenzene	Isophorone
2,4-Dinitrotoluene	Nitrobenzene
2,6-Dinitrotoluene	1,2,4-Trichlorobenzene
Hexachlorobenzene	

1 mL @ 2,000 µg/mL in Methylene chloride

Catalog#: CLPS-D

3,3' Dichlorobenzidine Stock Standard**1 Certified Component:**

3,3'-Dichlorobenzidine

1 mL @ 2,000 µg/mL in Methanol

Catalog#: CLPS-E**CLP 90 Mix F****4 Certified Components:**

Carbazole	4-Methylphenol (p-Cresol)
2-Methylphenol (o-cresol)	2,4,5-Trichlorophenol

1 mL @ 2,000 µg/mL in Methylene chloride

Catalog#: CLPS-F90**CLP Mix G****7 Certified Components:**

Benzyl alcohol	2-Nitroaniline
4-Chloroaniline	3-Nitroaniline
Dibenzofuran	4-Nitroaniline
2-Methylnaphthalene	

1 mL @ 2,000 µg/mL in Methylene chloride

Catalog#: CLPS-G**LOW CONCENTRATION
STATEMENT OF WORK
SEMIVOLATILE
CALIBRATION STANDARDS****Anilines, Low Level****3 Certified Components:**

2-Nitroaniline
3-Nitroaniline
4-Nitroaniline

1 mL @ 2,000 µg/mL in Methylene chloride

Catalog#: ANILINE-LC-A**Semivolatile Control Sample, Low Level****3 Certified Components:**

2-Chlorophenol
2,4,6-Trichlorophenol
Phenol

1 mL @ 2,000 µg/mL in Methanol

Catalog#: CLPS-LC-ALCS**Base Neutrals Mix A, Low Level****12 Certified Components:**

	Concentration
Benzo(a)pyrene	1,000 µg/mL
bis(2-Chloroethyl)ether	1,000 µg/mL
4-Chloroaniline	2,000 µg/mL
Diethyl phthalate	1,000 µg/mL
2,4-Dinitrotoluene	1,000 µg/mL
Hexachlorobenzene	1,000 µg/mL
Hexachloroethane	1,000 µg/mL
Isophorone	1,000 µg/mL
Naphthalene	1,000 µg/mL
N-Nitroso-di-n-propylamine	1,000 µg/mL
N-Nitrosodiphenylamine	1,000 µg/mL
1,2,4-Trichlorobenzene	1,000 µg/mL

1 mL in Methylene chloride

Catalog#: CLPS-LC-BN**Alternate Acid Surrogate for CLP SOW's****4 Certified Components:**

2-Chlorophenol-d ₄	Phenol-d ₅
2-Fluorophenol	2,4,6-Tribromophenol

1 mL @ 2,000 µg/mL in Methanol

Catalog#: CLP90-SA

5 mL @ 2,000 µg/mL in Methanol

Catalog#: CLP90-SA5**Customize your
solutions!**

Tell us what you want...

Specify compounds, concentrations, and matrix. Visit our web site to submit your request online:

www.spexcertiprep.com/customorganics

High Concentration Acid Surrogates

4 Certified Components:

2-Chlorophenol-d₄ 2-Fluorophenol
Phenol-d₆ 2,4,6-Tribromophenol

1 mL @ 7,500 µg/mL in Methanol

Catalog#: CLP90-75SA

5 mL @ 7,500 µg/mL in Methanol

Catalog#: CLP90-75SA5

Alternate Acid Surrogate for CLP SOW

3 Certified Components:

2-Fluorophenol
Phenol-d₅
2,4,6-Tribromophenol

1 mL @ 2,000 µg/mL in Methanol

Catalog#: CLPS-SA

5 mL @ 2,000 µg/mL in Methanol

Catalog#: CLPS-SA5

Alternate High Concentration Acid Surrogates for CLP

3 Certified Components:

2-Fluorophenol
Phenol-d₅
2,4,6-Tribromophenol

1 mL @ 10,000 µg/mL in Methanol

Catalog#: CLPS-SAH

5 mL @ 10,000 µg/mL in Methanol

Catalog#: CLPS-SAH5

Alternate Base/Neutrals Surrogate for CLP SOW's

4 Certified Components:

1,2-Dichlorobenzene-d₄ Nitrobenzene-d₅
2-Fluorobiphenyl Terphenyl-d₁₄

1 mL @ 1,000 µg/mL in Methylene chloride:Acetone

Catalog#: CLP90-SB

5 mL @ 1,000 µg/mL in Methylene chloride:Acetone

Catalog#: CLP90-SB5

High Concentration Base/Neutrals Surrogate

4 Certified Components:

1,2-Dichlorobenzene-d₄ Nitrobenzene-d₅
2-Fluorobiphenyl Terphenyl-d₁₄

1 mL @ 5,000 µg/mL in Methylene chloride:Acetone

Catalog#: CLP90-SBH

5 mL @ 5,000 µg/mL in Methylene chloride:Acetone

Catalog#: CLP90-SBH5

Alternate Base/Neutrals Surrogate for CLP SOW

3 Certified Components:

2-Fluorobiphenyl
Nitrobenzene-d₅
Terphenyl-d₁₄

1 mL @ 1,000 µg/mL in Methylene chloride:Acetone

Catalog#: CLPS-SB

High Concentration Base/Neutrals Surrogate

3 Certified Components:

2-Fluorobiphenyl
Nitrobenzene-d₅
Terphenyl-d₁₄

1 mL @ 5,000 µg/mL in Methylene chloride:Acetone

Catalog#: CLPS-SBH

5 mL @ 5,000 µg/mL in Methylene chloride:Acetone

Catalog#: CLPS-SBH5

Organic Tinted Surrogates

4 Certified Components:

	µg/mL
2-Fluorobiphenyl	5,000
p-Terphenyl-d ₁₄	5,000
Nitrobenzene-d ₅	5,000
Methyl Orange	12,500

1 mL in Methylene chloride:Acetone:Benzene

Catalog#: CLPS-SBH-TI

5 mL in Methylene chloride:Acetone:Benzene

Catalog#: CLPS-SBH5-TI

Internal Standard

6 Certified Components:

Acenaphthene-d₁₀ Naphthalene-d₈
Chrysene-d₁₂ Perylene-d₁₂
1,4-Dichlorobenzene-d₄ Phenanthrene-d₁₀

1 mL @ 4,000 µg/mL in Methylene chloride

Catalog#: CLPS-I

Alternate Internal Standard

6 Certified Components:

2 mL @ 2,000 µg/mL in Methylene chloride

Catalog#: CLPS-I2

1 mL @ 2,000 µg/mL in Methylene chloride

Catalog#: CLPS-I90

Acid Extractable Matrix Spikes**5 Certified Components:**

4-Chloro-3-methylphenol	Pentachlorophenol
2-Chlorophenol	Phenol
4-Nitrophenol	

1 mL @ 2,000 µg/mL in Methanol

Catalog#: CLPS-MSA

5 mL @ 2,000 µg/mL in Methanol

Catalog#: CLPS-MSA5**Base/Neutrals Matrix Spike****6 Certified Components:**

Acenaphthene	N-Nitroso-di-n-propylamine
1,4-Dichlorobenzene	Pyrene
2,4-Dinitrotoluene	1,2,4-Trichlorobenzene

1 mL @ 1,000 µg/mL in Methylene chloride

Catalog#: CLPS-MSB**Base/Neutrals Tinted Indicator Matrix Spike****7 Certified Components:**

Acenaphthene	N-Nitrosodi-n-propylamine
Bromophenol blue	Pyrene
1,4-Dichlorobenzene	1,2,4-Trichlorobenzene
2,4-Dinitrotoluene	

1 mL @ 1,000 µg/mL in Methanol

Catalog#: CLPS-MSB-TI**Alternate Combination Semivolatile Surrogates for CLP SOW****8 Certified Components:**

	µg/mL		µg/mL
2-Chlorophenol-d ₄	1,500	Nitrobenzene-d ₅	1,000
1,2-Dichlorobenzene-d ₄	1,000	Phenol-d ₅	1,500
2-Fluorobiphenyl	1,000	Terphenyl-d ₁₄	1,000
2-Fluorophenol	1,500	2,4,6-Tribromophenol	1,500

1 mL @ 2,000 µg/mL in Methylene chloride:Acetone

Catalog#: CLP90-SURR**Organic Tinted Indicator Surrogate****9 Certified Components:**

	µg/mL
2-Chlorophenol-3,4,5,6-d ₄	1,500
1,2-Dichlorobenzene-d ₄	1,000
2-Fluorobiphenyl	1,000
2-Fluorophenol	1,500
Methyl Orange	2,500
Nitrobenzene-d ₅	1,000
Phenol-d ₆	1,500
p-Terphenyl-d ₁₄	1,000
2,4,6-Tribromophenol	1,500

1 mL in Methylene chloride:Acetone

Catalog#: CLP90-SURR-TI**Combination Semivolatile Surrogates for CLP SOW****6 Certified Components:**

	µg/mL		µg/mL
2-Fluorobiphenyl	1,000	2-Fluorophenol	2,000
Nitrobenzene-d ₅	1,000	Phenol-d ₅	2,000
Terphenyl-d ₁₄	1,000	2,4,6-Tribromophenol	2,000

1 mL @ in Methylene chloride:Acetone

Catalog#: CLPS-SURR**GC-MS Tuning Standard****1 Certified Component:**

Decafluorotriphenylphosphine

1 mL @ 2,500 µg/mL in Methanol

Catalog#: CLPS-T**4-Component GC-MS Tuning Standard****4 Certified Components:**

Benzidine	Decafluorotriphenylphosphine
4,4-DDT	Pentachlorophenol

1 mL @ 2,500 µg/mL in Methanol

Catalog#: CLPS-T4

METHOD 1311 - TCLP

EPA methods 1311 and 1312 are analytical methods for the monitoring of a wide range of compounds in various samples using the Toxicity Characteristic Leaching Procedure (TCLP).

Base/Neutral/Acid Extractable Spike Solution for Method 1311

13 Certified Components:

o-Cresol	Hexachloroethane
m-Cresol	Nitrobenzene
p-Cresol	Pentachlorophenol
1,4-Dichlorobenzene	Pyridine
2,4-Dinitrotoluene	2,4,5-Trichlorophenol
Hexachlorobenzene	2,4,6-Trichlorophenol
Hexachlorobutadiene	

1 mL @ 2,000 µg/mL in Methylene chloride

Catalog#: TCLP-BNA

